

EverBond™

REBOND, REPAIR & REINFORCE

NEW LAUNCH

- TARGETS THE MAIN BONDS IN THE HAIR (SPECIFICALLY DISULFIDE BONDS)
- PENETRATES THE CORTEX TO REVERSE AND REPAIR DAMAGE
- STRENGTHENS THE HAIR FIBER, REDUCING BREAKAGE
- PLANT-DERIVED TECHNOLOGY

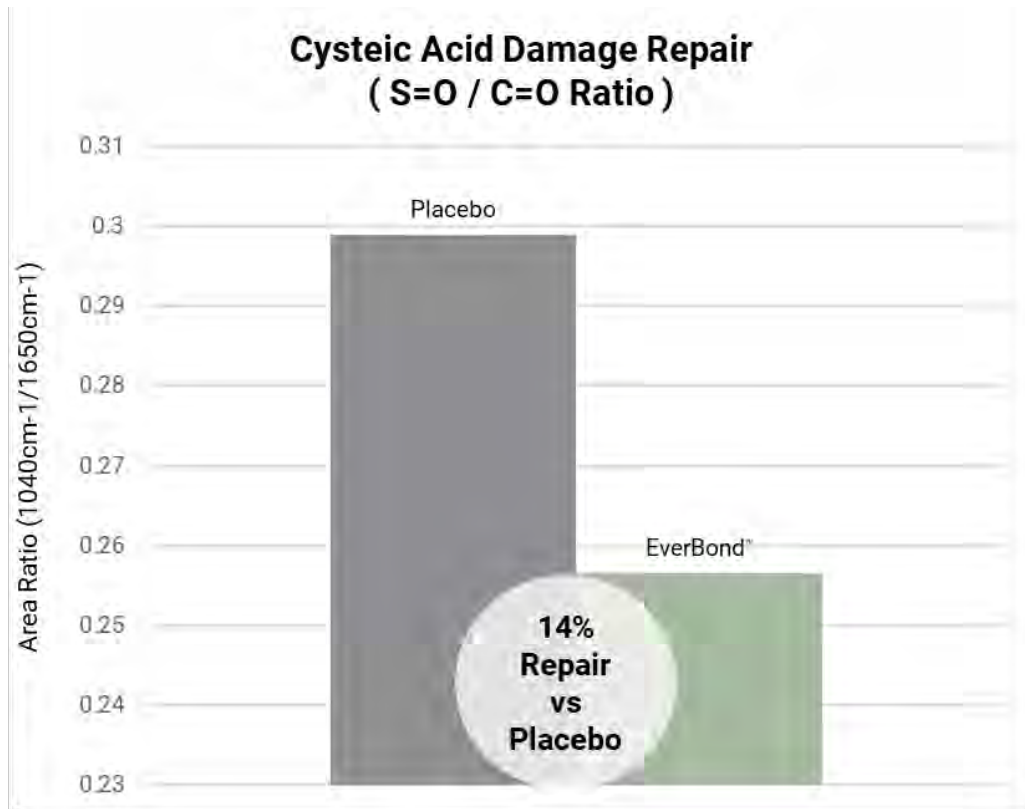
tel. 1-800-526-0372 mail. info@tri-k.com visit. www.tri-k.com

**TRI-K**
A MEMBER OF THE GALAXY GROUP

EverBond™

REBOND, REPAIR & REINFORCE

CHARACTERIZATION OF HAIR FIBER VIA FTIR-ATR



*p<0.05 EverBond™ vs Placebo

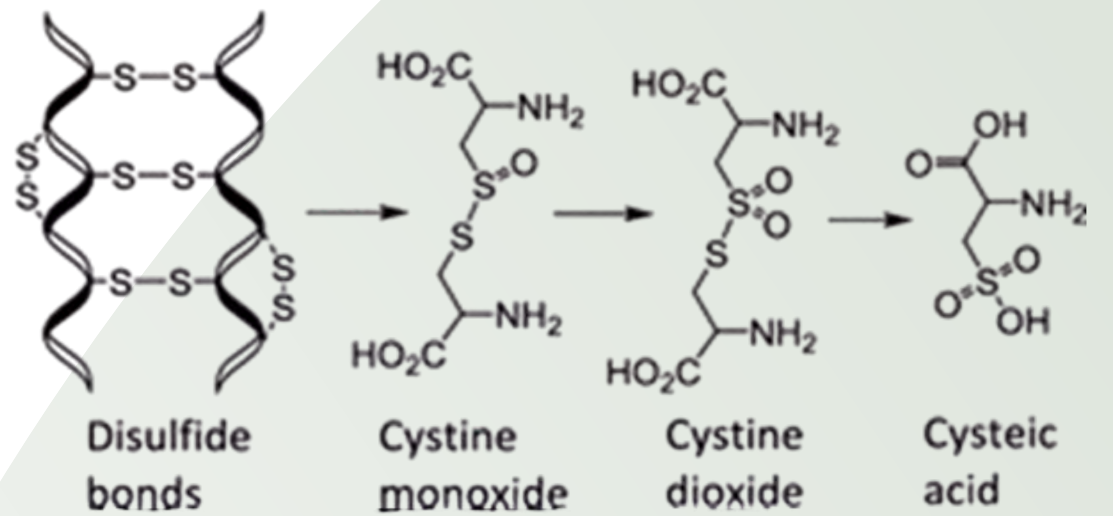
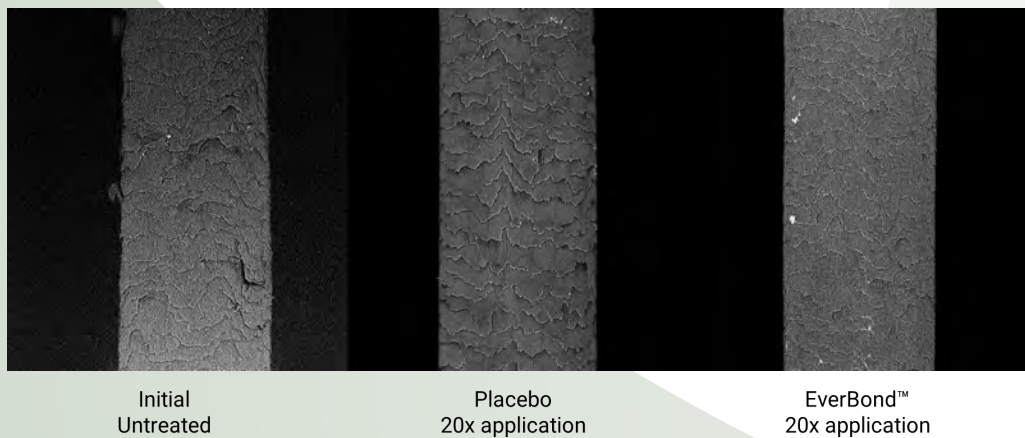


Image source: Kissi et. al., *Herit Sci* (2017) 5:49

Chemical treatment breaks disulfide bonds which increases the levels of detectable cysteic acid (sulfonic acid). EverBond™ reverses this effect and repairs disulfide bonds.

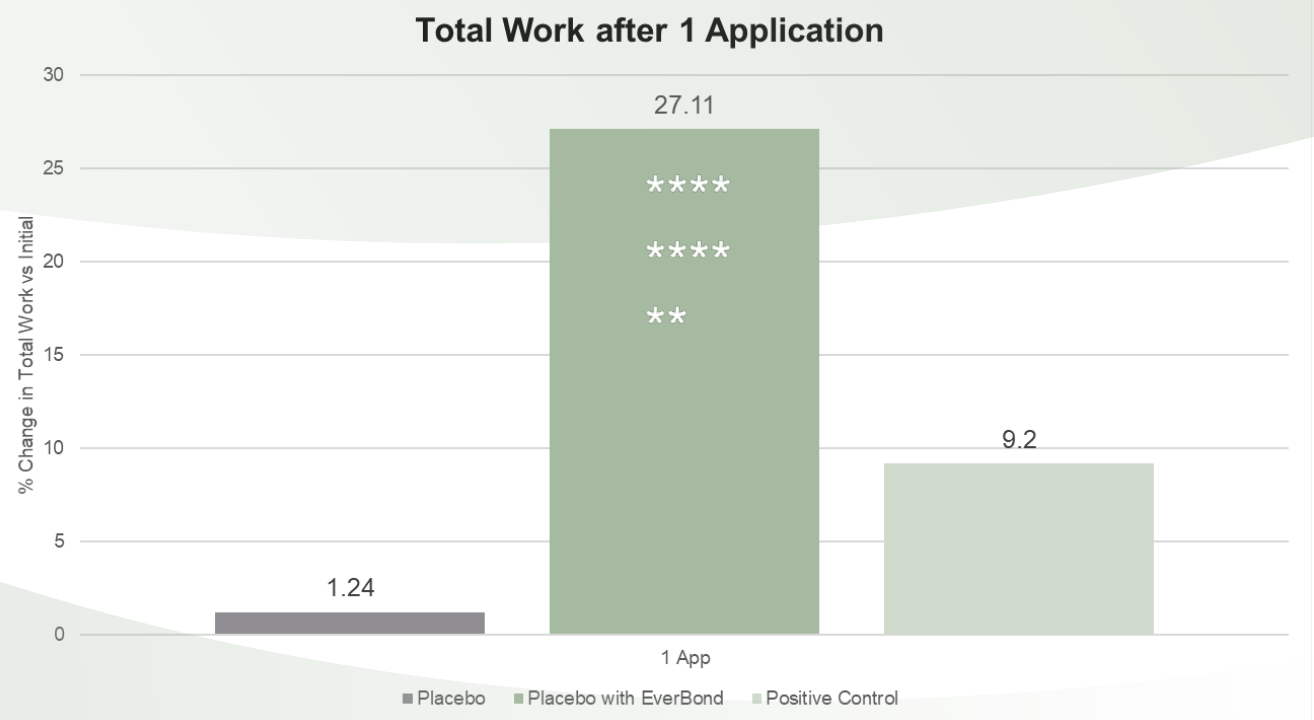
The reduction in area ratio between cystine and amide bonds indicates that EverBond™ has rebonded the hair

BUILD UP STUDY



Hair treated with EverBond™ showed no build-up after 20 applications

TENSILE STRENGTH HAIR EVALUATION- SHAMPOO



****p<0.0001 EverBond™ vs Initial and Placebo

**p<0.01 EverBond™ vs Control

CLAIMS & CERTIFICATIONS



EverBond™ increases hair strength, making it less susceptible to breakage compared to the placebo Shampoo. It also performs significantly better than popular bond-building benchmark shampoo (positive control)